

SEAVIEW AT JUNO BEACH RE-PLAT OF LOTS B-1 THROUGH B-8

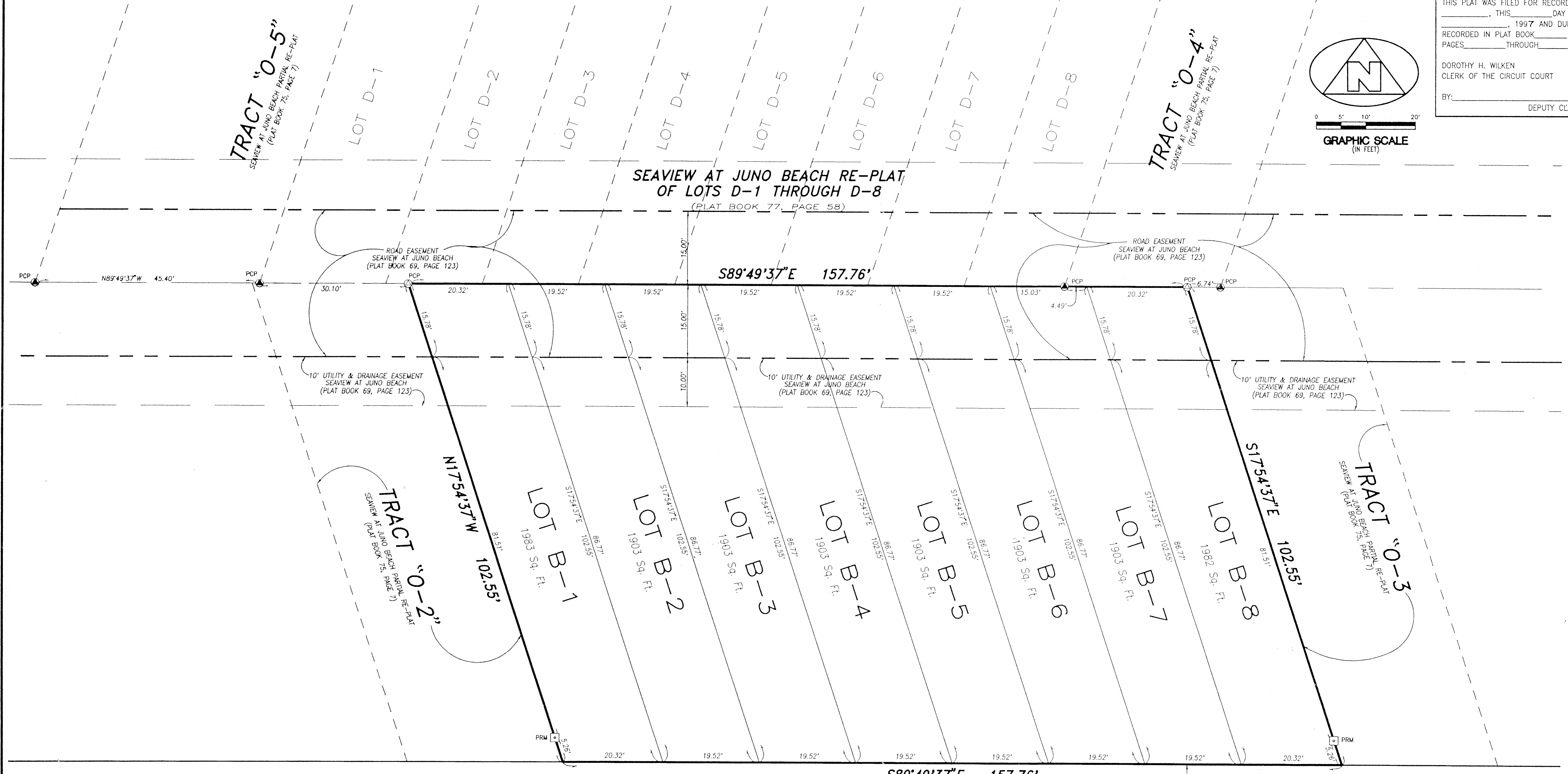
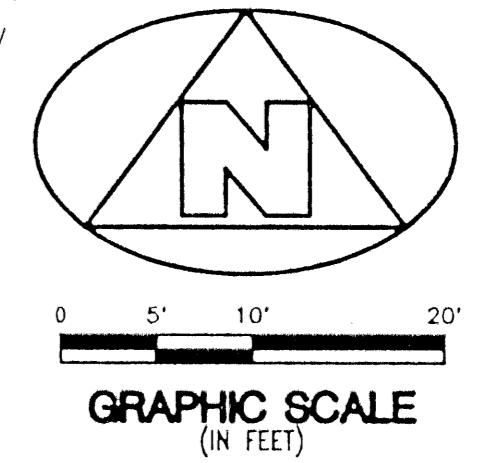
LYING IN SECTION 21, TOWNSHIP 41 SOUTH, RANGE 43 EAST, TOWN OF JUNO BEACH, AND BEING A RE-PLAT OF LOTS B-1 THROUGH B-8, INCLUSIVE, SEAVIEW AT JUNO BEACH PARTIAL RE-PLAT, AS RECORDED IN PLAT BOOK 75, PAGE 7, TOWN OF JUNO BEACH, PALM BEACH COUNTY, FLORIDA

STATE OF FLORIDA)
) SS
 COUNTY OF PALM BEACH)

THIS PLAT WAS FILED FOR RECORD AT _____, THIS _____ DAY OF _____, 1997 AND DULY RECORDED IN PLAT BOOK _____, ON PAGES _____ THROUGH _____

DOROTHY H. WILKEN
 CLERK OF THE CIRCUIT COURT

BY: _____ DEPUTY CLERK



- SURVEYOR'S NOTES AND LEGEND:**
1. BEARINGS SHOWN OR STATED HEREON, ARE BASED ON, OR ARE RELATIVE TO THE BEARING OF SOUTH 89°49'37\"/>
 2. IN THOSE INSTANCES WHERE UTILITY/DRAINAGE STRUCTURES ARE CONSTRUCTED IN CONFLICT WITH THE PLATTED PERMANENT CONTROL POINTS (P.C.P.) POSITION, STRADDLERS MONUMENTED AS PERMANENT CONTROL POINTS WILL BE SET TO REFERENCE THE PLATTED P.C.P. POSITION.
 3. LINES WHICH INTERSECT CURVES ARE NOT RADIAL, UNLESS OTHERWISE NOTED.
 4. C/L DENOTES A CENTERLINE
 5. DENOTES A SET #2424 PERMANENT REFERENCE MONUMENT (P.R.M.)
 6. DENOTES A SET #2424 PERMANENT CONTROL POINT (P.C.P.)
 7. DENOTES A FOUND #2424 PERMANENT CONTROL POINT (P.C.P.)
 8. Sq. Ft. DENOTES SQUARE FEET

— UNPLATTED —

THIS INSTRUMENT WAS PREPARED BY WM. R. VAN CAMPEN, R.L.S., IN AND FOR THE OFFICES OF BENCH MARK LAND SURVEYING & MAPPING, INC., 4152 WEST BLUE HERON BOULEVARD, SUITE 121, RIVIERA BEACH, FLORIDA

BENCH MARK
 Land Surveying and Mapping, Inc.
 4152 West Blue Heron Blvd., Suite 121, Riviera Beach, FL 33404
 Fax (407) 844-9659 Phone (407) 848-2102

RECORD PLAT			
SEAVIEW AT JUNO BEACH RE-PLAT OF LOTS B-1 THROUGH B-8			
DWN DIM & SEG	FB	DATE 06/01/96	WO.# P55
CKD	FILE P55-B.dwg	SCALE 1" = 10'	SHEET 2 OF 2

SUBDIVISION SEAVIEW AT JUNO BEACH
 BOOK 79 PAGE 18 FLOOD MAP +
 FLOOD ZONE - ZONING -
 QUAD # - ZIP CODE -
 SE -
 PUD NAME Town of Juno